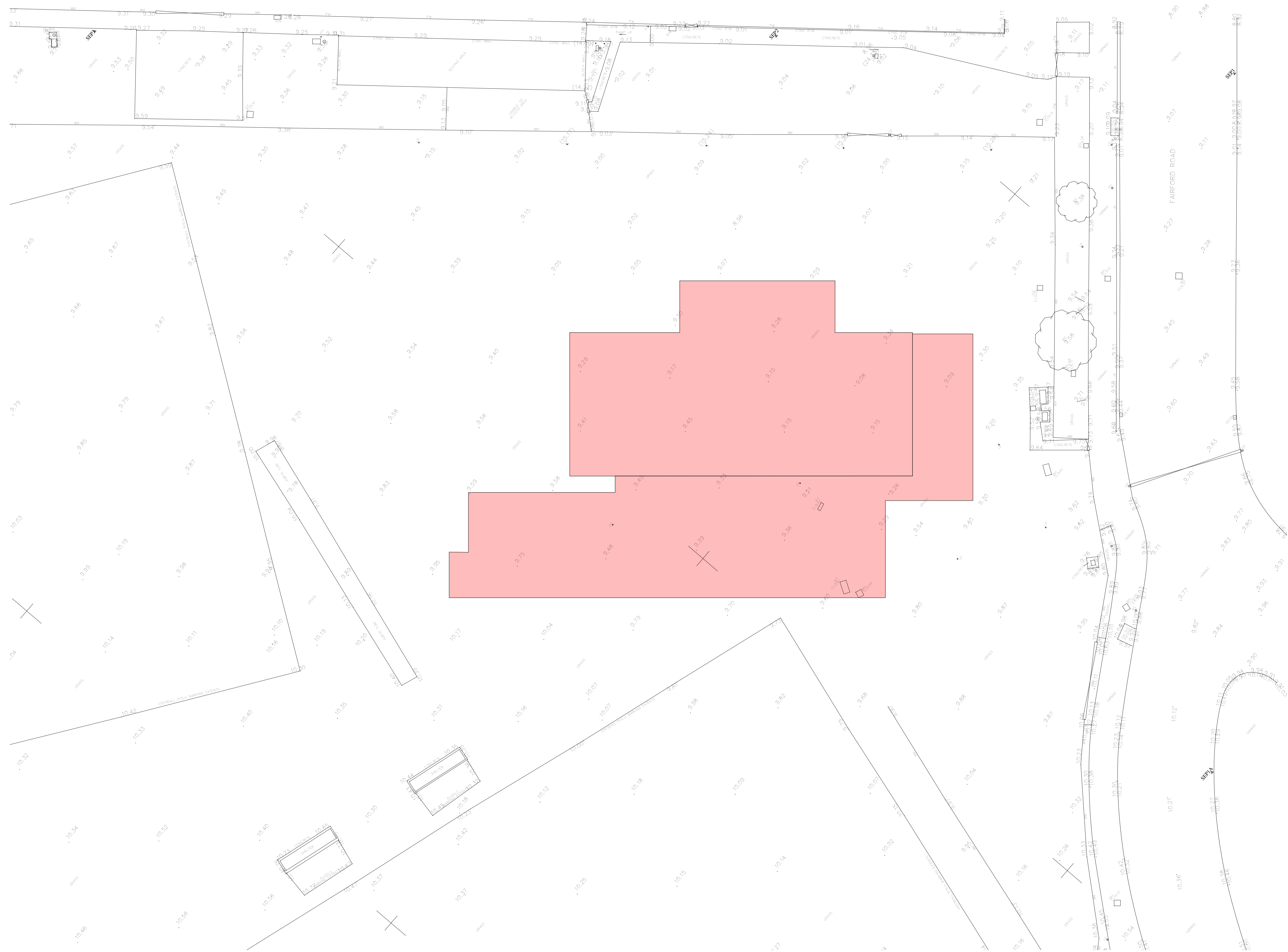


NOTES
 Copyright: All rights reserved.
 This drawing must not be reproduced without permission.
 This drawing must not be scaled. Dimensions are in millimetres unless specified.



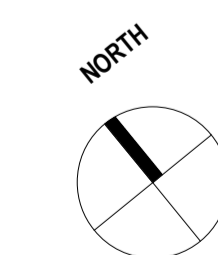
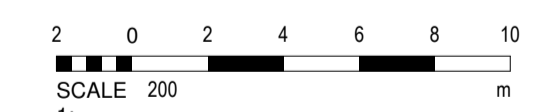
NOTES:

- Original SEP survey S17833-2dT issued 31.01.19 used for background topo information.
- Co-ordinates are base on above SEP survey information.
- Runway information based on site information issued by ABUK.

Note: Grids and true north on ABUK and SEP information DO NOT align .

Runway position has been based on overlaying both sets of information with the ABUK being moved and rotated with the NW corner of the existing football stand.

Existing Site Topo
 1 : 200



| PI | DATE | REVISION NOTE | BY | CHECK |
|-----|----------|---------------|-----|-------|
| PI | 22.05.19 | First Issue | JAH | LS |
| REV | DATE | REVISION NOTE | BY | CHECK |



New Occupational Health & Wellbeing Centre

Existing Site Topo

2468_00051

STATUS | PLANNING

SCALE | 1 : 200 @ A1

DRAWN BY | JAH

DATE | 24/07/19

2468- EWA- OH- 00- DR- A- 00051

Vanilla Factory 39 Fleet Street Liverpool L1 4AR
 T: +44 (0)151 708 1802 E: info@ewa.co.uk